

# SCHAEFFLER TRIFINITY™ WHEEL BEARING

State-of-the-art, fully optimized three-row angular contact ball bearing

Schaeffler's TriFinity wheel bearing offers significantly higher stiffness and longer service life in comparison to conventional two-row ball bearings. Its ingenious design makes it possible to accommodate higher axle loads within the same bearing envelope while minimizing bearing friction and mass.

## ADVANTAGES



### Increased driving performance

- **33%** improved stiffness



### Modular design

- **24%** greater load capacity vs. standard design
- Downsizing solution offers further friction reduction vs. standard design



### Robust fabrication

- Designed to last the life of the vehicle
- Optimized sealing performance



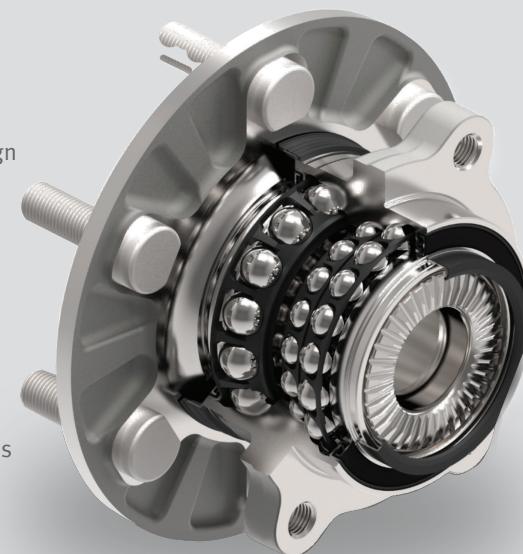
### Lighter weight

- Helps maximize electric vehicle range
- Helps minimize CO2 emissions in ICE vehicles

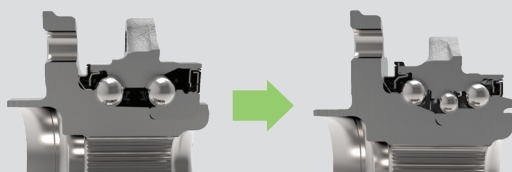


### 53% less friction

- Balances load distribution
- Optimized raceway design
- Friction-optimized grease



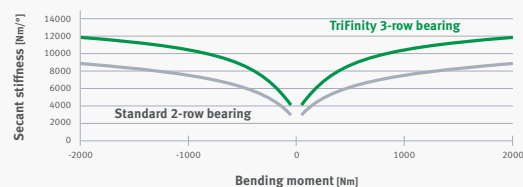
## Standard Bearing vs. TriFinity Bearing



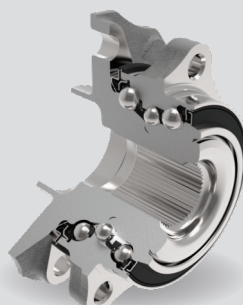
Standard Bearing

TriFinity Bearing

### Stiffness + 33%



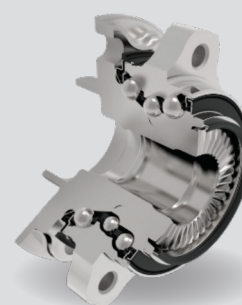
## Solution 1: More load density



### vs. Standard Bearings

- High stiffness / 33% less deflection
- 24% more load capacity

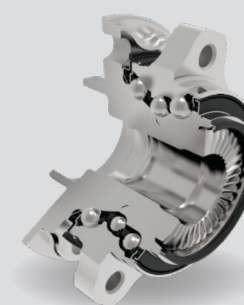
## Solution 2: Downsizing



### vs. Standard Bearings

- Same capacity as standard design - but in a smaller package
- 19% less friction

## Solution 3: Design substitution



### vs. Standard Bearings

- Change from TRB to BB design
- Same envelope dimensions
- As much as 53% less friction