

Instruction Sheet for Calculating NAFTA VNM

(Value of Non-Originating Material)

- I. Determine the sub-components for each supplied delivery part and determine whether or not the subcomponent is imported from a country other than Canada or Mexico.
 - A. If the sub-component is **NOT** imported, request the Value of Non-Originating Material (VNM) from your supplier. Your supplier should follow all these instructions to determine the VNM of the sub-component.

If all parts, raw materials, and labor originate at your facility, then VNM is \$0.

- B. If the sub-component is imported from a country other than Canada or Mexico, determine if the subcomponent is on the attached Trace List (Annex 403.1).
 - If the sub-component is **NOT** on the Trace List, the VNM is \$0.
 - If the sub-component is on the Trace List, determine the VNM.
- II. Sum the VNM for each subcomponent in the part. This will equal the total VNM for the Part. **Place this amount in the "VNM" column of the "NAFTA Domestic Content Information Form."**

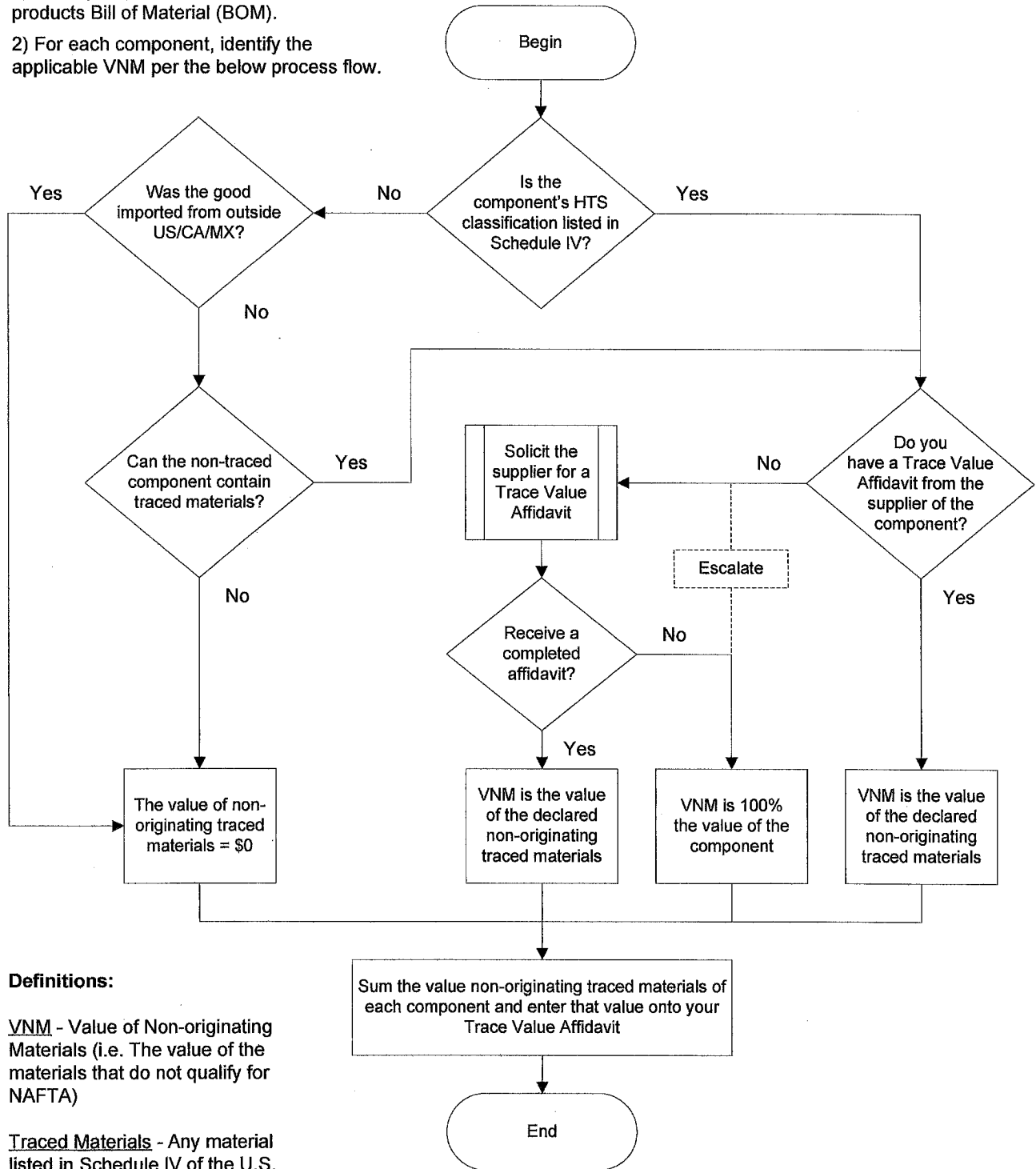
NOTE: all amounts should be in US dollars.

- III. Repeat the steps for each delivery part number.
 - IV. Sign and date the form as indicated.

Steps for Determining the Value of the Non-NAFTA Originating Traced Materials for Light-Duty Automotive Goods

Instructions:

- 1) Identify all purchased components in the products Bill of Material (BOM).
- 2) For each component, identify the applicable VNM per the below process flow.



Definitions:

VNM - Value of Non-originating Materials (i.e. The value of the materials that do not qualify for NAFTA)

Traced Materials - Any material listed in Schedule IV of the U.S. Code of Federal Regulations (i.e. Annex 403.1 of the NAFTA Agreement)

**NAFTA Trace List:
List of Tariff Provisions for Article 403(1)**

Note: For purposes of reference only

SCHEDULE IV LIST OF TARIFF PROVISIONS FOR THE PURPOSES OF SECTION 9 OF THE APPENDIX
4009
4010.31 through 4010.34 and 4010.39.10 through 4010.39.20
4011
4016.93.10
4016.99.30 and 4016.99.55
7007.11 and 7007.21
7009.10
8301.20
8407.31
8407.32
8407.33
8407.34.05, 8407.34.15 and 8407.34.25
8407.34.35, 8407.34.45 and 8407.34.55
8408.20
8409
8413.30
8414.59.30
8414.80.05
8415.20
8421.39.40
8481.20, 8481.30 and 8481.80
8482.10 through 8482.80
8483.10 through 8483.40
8483.50
8501.10
8501.20
8501.31
8501.32.45
8507.20.40, 8507.30.40, 8507.40.40 and 8507.80.40
8511.30
8511.40
8511.50

8512.20
8512.40
8519.93
8527.21
8527.29
8536.50
8536.90
8537.10.60
8539.10
8539.21
8544.30
8706
8707
8708.10.30
8708.21
8708.29.20
8708.29.10
8708.29.15
8708.39
8708.40
8708.50
8708.60
8708.70.05, 8708.70.25 and 8708.70.45
8708.80
8708.91
8708.92
8708.93.15 and 8708.93.60
8708.94
8708.99.03, 8708.99.27 and 8708.99.55
8708.99.06, 8708.99.31 and 8708.99.58
8708.99.09, 8708.99.34 and 8708.99.61
8708.99.12, 8708.99.37 and 8708.99.64
8708.99.15, 8708.99.40 and 8708.99.67
8708.99.18, 8708.99.43 and 8708.99.70
8708.99.21, 8708.99.46 and 8708.99.73
8708.99.24, 8708.99.49 and 8708.99.80
9031.80
9032.89
9401.20